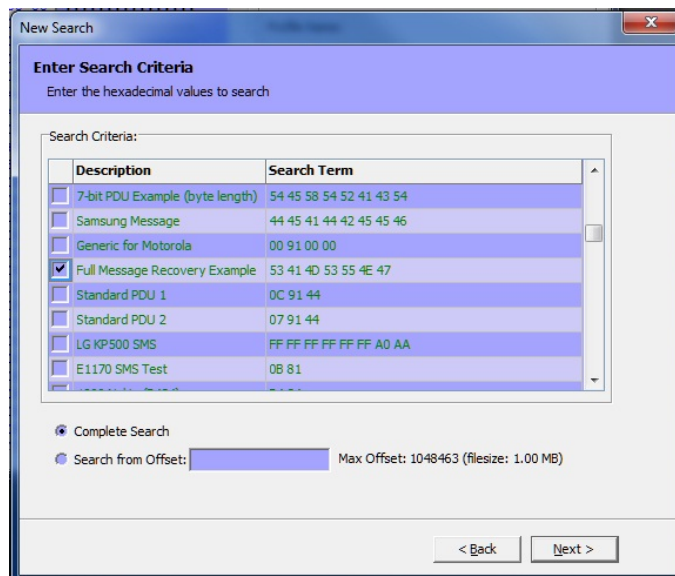


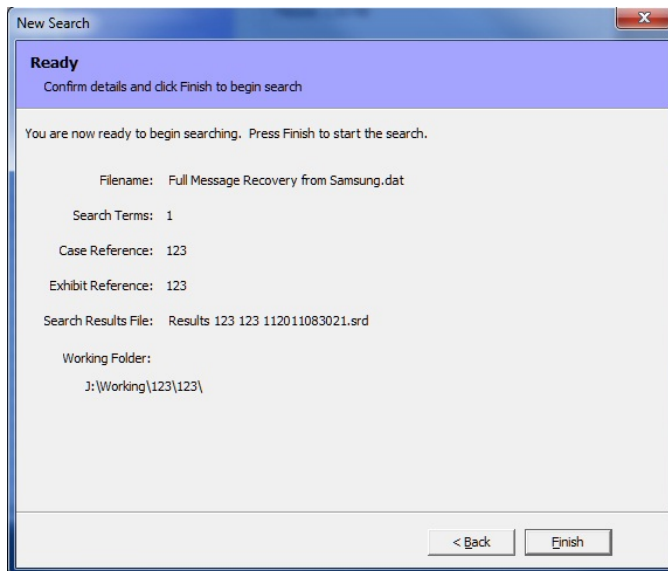
teXtract Quick Start Guide

- Once teXtract is installed, insert the dongle into a free USB port.
- Click the teXtract icon to start the program.
- You will be presented with the New Search Wizard.
- Choose a file to search, then click Next.
- Select the search criteria ('Complete Search' will search the entire file, 'Search from Offset' will search from the position you specify). At this point you can add and remove search terms. Click Next after selection.

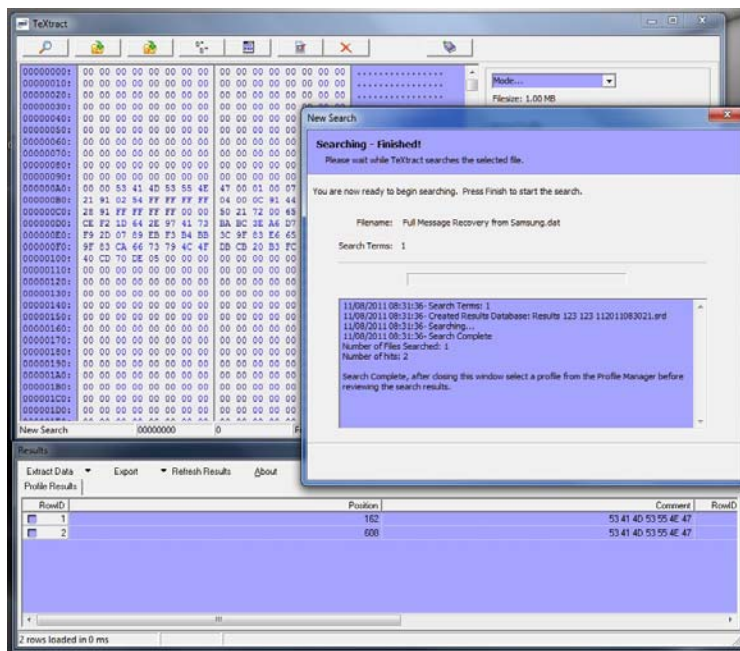


- Enter the details for the case, the minimum information required is Case reference and Exhibit Reference then click Next.
- Review the details before clicking Finish.

teXtract

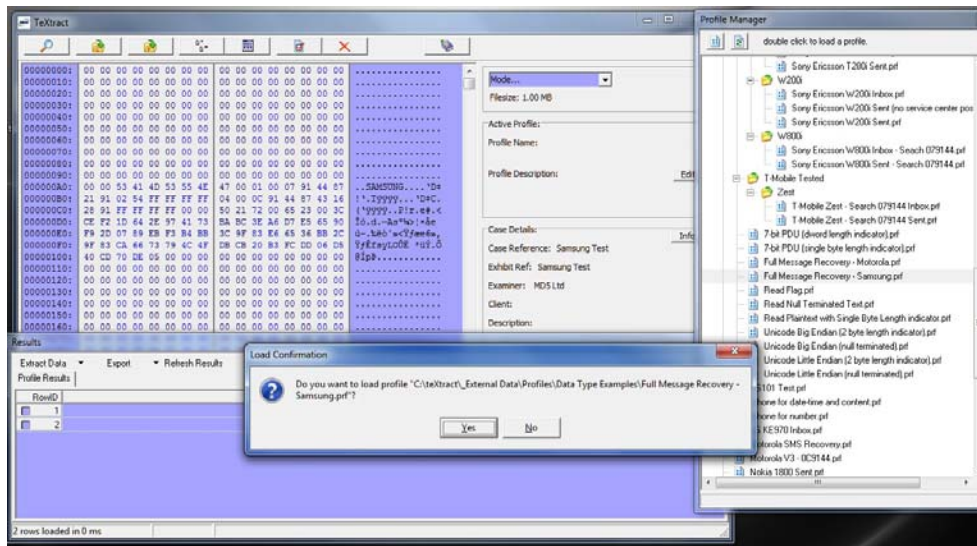


- teXtract will search the selected file. On completion the search summary will be displayed. Close this window when you are ready.

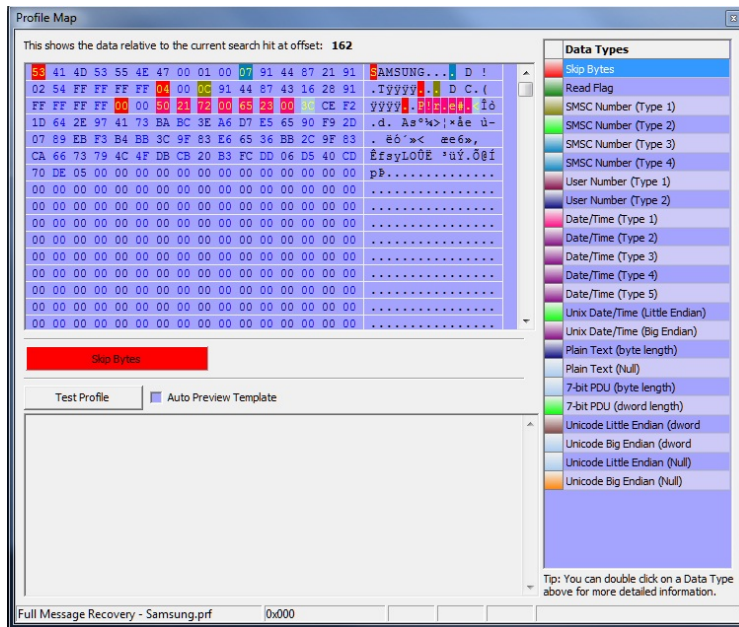


- If search hits have been identified, select the 'Profile Manager' window. Load an appropriate profile specific to the file you are examining. Note: You cannot examine data without loading a profile. If there is no profile create a new blank profile (right mouse click > New) from within Profile Manager.

teXtract

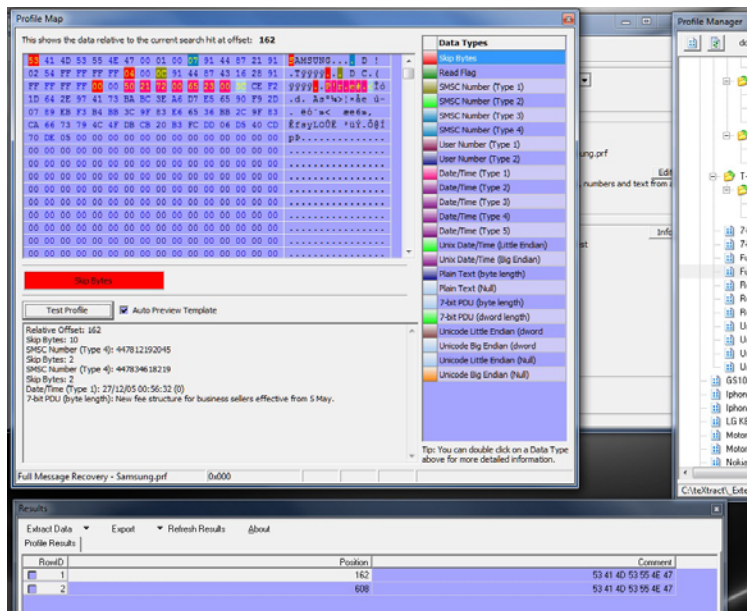


- Search hits identified during a search will be listed within the Search Results window. When a profile is loaded, clicking on any search result will display the data in the Profile Map.



- The profile map gives a visual representation of the currently selected search hit along with the active profile. The Profile Map also allows you to preview the data decoded to give you a good idea how the data will appear when exported.

teXtract



- Depending on the memory dump you are examining it may take several Profiles to recover data depending how the data is structured. It is possible to recover date/times, messages and phone numbers from almost any memory dump. You will also find that a particular Profile written for a specific make/model of phone may work on other handsets.

